

N84°54'46"E  
14.84'

50.2  
51.1

S01°05'44"W 185.64'

37

N01°05'44"E 186.08'

36  
BFE = 50.5  
Low = 51.1

N84°54'46"E 93.76'

N84°54'46"E 102.00'

S05°05'14"E 185.00'  
S05°05'14"W 185.00'

Block 1  
35  
BFE = 50.6  
Low = 51.2

S84°54'46"W 102.00'

S05°05'14"E 185.00'  
S05°05'14"W 185.00'

34  
BFE = 50.8  
Low = 51.2

S84°54'46"W 102.00'

S05°05'14"E 185.00'  
S05°05'14"W 185.00'

33  
BFE = 51.0  
Low = 51.5

S84°54'46"W 102.00'

N84°54'46"E 82.00'

S38°46'38"E  
36.06'

S05°05'14"E 155.00'

L=29.69'  
R=461.25'  
S89°15'04"W 29.69'  
Chord

W. Back Forty Dr.

N84°54'46"E 74.99'

N84°54'46"E 53.17'

N84°54'46"E 90.00'

S05°05'14"E 120.00'  
S05°05'14"W 120.00'

11  
BFE = 50.6  
Low = 51.4

S05°13'16"E 120.00'

9  
BFE = 50.8  
Low = 53.7

S. Lone Hollow Way

N39°50'45"E  
14.12'

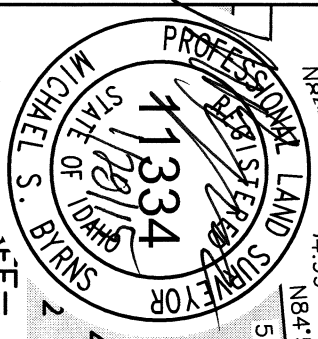
N05°13'16"W 74.00'

N84°54'46"E 110.00'

14  
Block 3  
BFE = 51.1  
Low = 52.1

S84°54'46"W 120.00'

S05°13'16"E 84.00'



JUB ENGINEERS, INC.  
1408 W. 10th St. Boise, ID 83725  
PH: 208-333-2500  
FAX: 208-333-2501

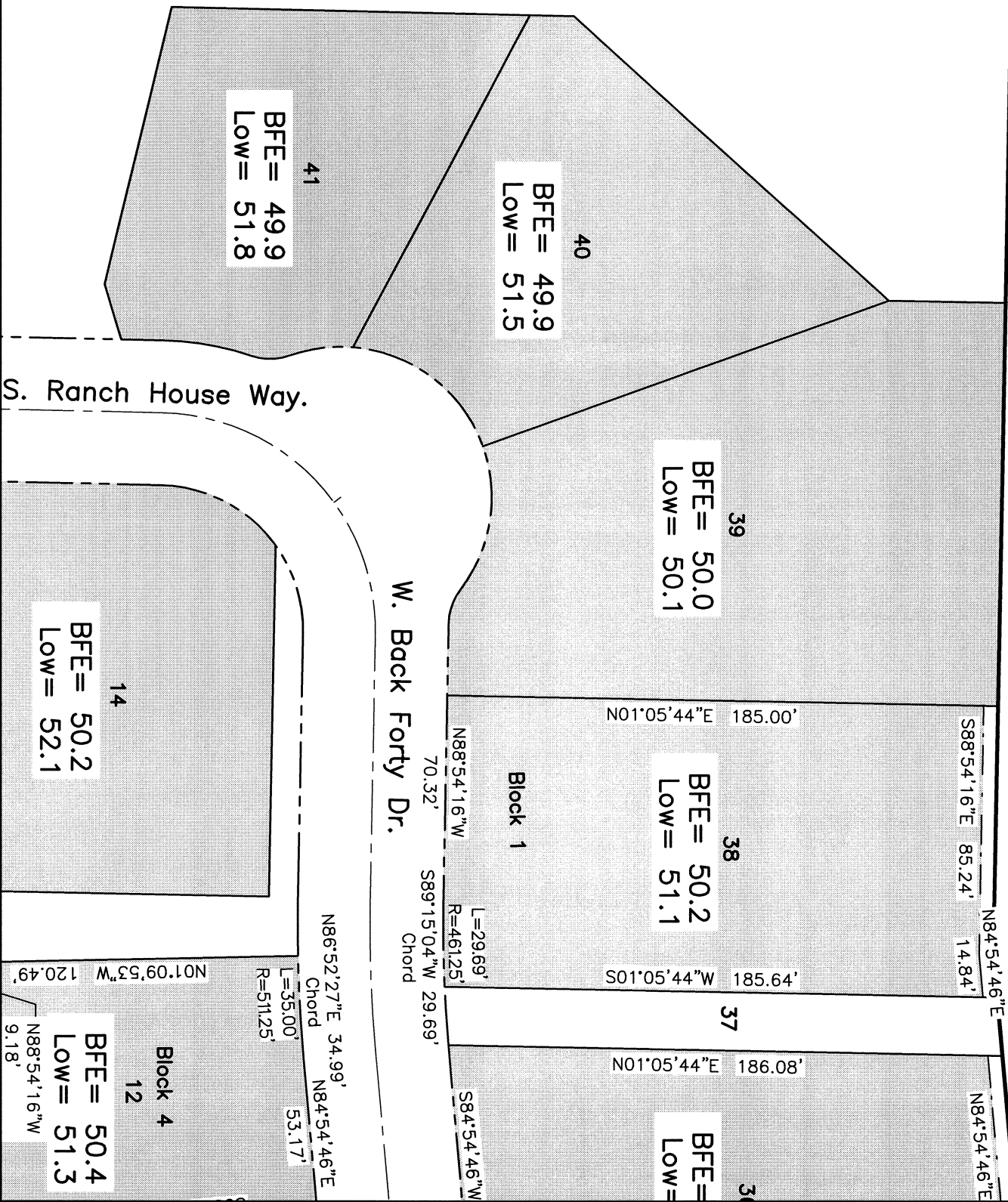
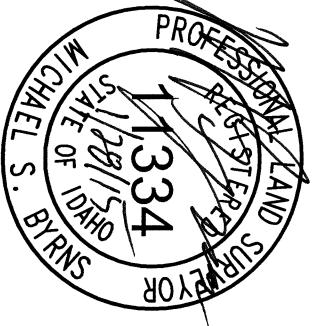
BFE = Base Flood Elevation for lot/portion to be removed.  
Low = Lowest elevation on portion of lot to be removed.  
Shaded area indicates portion of lot to be removed.

Mace River Ranch Subdivision No. 2

Eagle, Idaho

FEMA Floodplain BFEs, Lowest Lot Elevation, & Area to be Removed.  
1"=50' Sheet 1 of 4





BFE = Base Flood Elevation for lot/portion to be removed.  
Low = Lowest elevation on portion of lot to be removed.  
Shaded area indicates portion of lot to be removed.

FEMA Floodplain BFEs, Lowest Lot Elevation, & Area to be Removed.  
1"=50' Sheet 2 of 4

Mace River Ranch Subdivision No. 2

Eagle, Idaho

JUB ENGINEERS, INC.



JUB ENGINEERS, INC.

PROFESSIONAL LAND SURVEYOR  
MICHAEL S. BYRNS  
STATE OF IDAHO  
LICENSE NO. 11334  
EXPIRES 11/29/15

41  
BFE = 49.9  
Low = 51.8

S. Ranch House Way

W. Copperwood St.

Block 6  
2  
BFE = 49.9  
Low = 51.9

Block 4  
16  
BFE = 50.1  
Low = 51.7

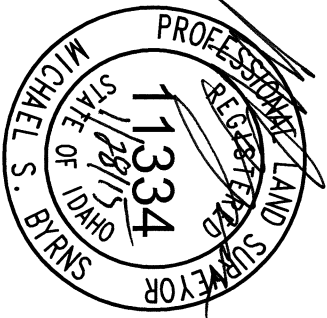
15  
BFE = 50.1  
Low = 50.4

14  
BFE = 50.2  
Low = 52.1

Block 4  
12  
BFE = 50.4  
Low = 51.3  
N88°54'16"W 9.18'  
S84°54'46"W 87.26'

N86°52'27"E 34.99'  
Chord  
L=35.00'  
R=511.25'  
N84°54'46"E 53.17'

N05°05'14"W 120.00'  
S05°05'14"E 120.00'



Mace River Ranch Subdivision No. 2

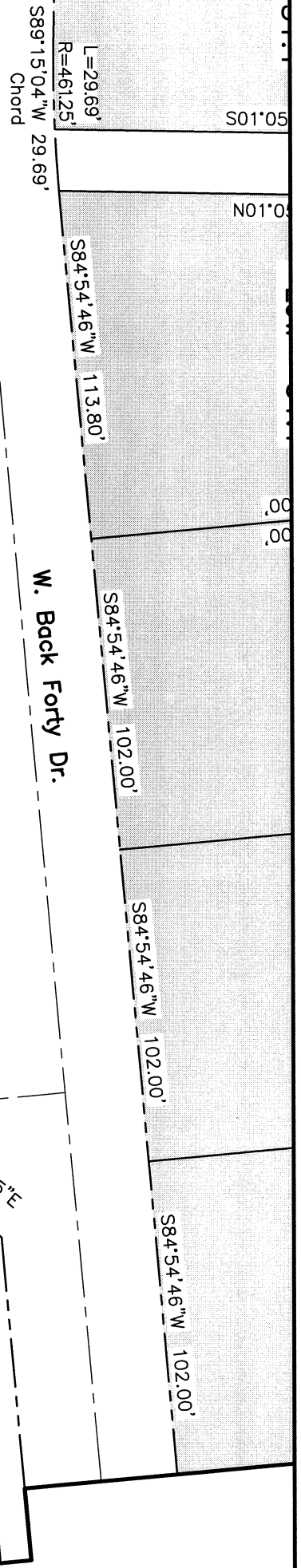
Eagle, Idaho

FEMA Floodplain BFEs, Lowest Lot Elevation, & Area to be Removed.  
1"=50' Sheet 3 of 4



JUB ENGINEERS, INC.

THIS DRAWING IS UNLESS OTHERWISE NOTED TO BE IN ACCORDANCE WITH THE IBC AND IBCS.



W. Back Forty Dr.

S. Lone Hollow Way

Mace River Ranch Subdivision No. 2  
Eagle, Idaho



Block 4  
12  
BFE = 50.4  
Low = 51.3

Block 11  
11  
BFE = 50.6  
Low = 51.4

Block 9  
9  
BFE = 50.8  
Low = 53.7

Block 8  
8  
BFE = 50.6  
Low = 50.9

Block 14  
14  
BFE = 51.1  
Low = 52.1

BFE = Base Flood Elevation for lot/portion to be removed.  
Low = Lowest elevation on portion of lot to be removed.  
Shaded area indicates portion of lot to be removed.

FEMA Floodplain BFEs, Lowest Lot Elevation, & Area to be Removed.  
1"=50' Sheet 4 of 4



J-U-B ENGINEERS, INC.

J-U-B COMPANIES



THE LANGDON GROUP



GATEWAY MAPPING INC.

Mace River Ranch Subdivision No. 2  
Boundary Descriptions of  
Areas to be Removed From SFHA

Portions of 9 lots situated in Mace River Ranch Subdivision No. 2 (Book 107 of Plats at Pages 14960 through 14966, records of Ada County, Idaho) in Section 17, Township 4 North, Range 1 East, Boise Meridian, City of Eagle, Ada County, Idaho, being more particularly described as follows:

Lot 33, Block 1

BEGINNING at the southeast corner of Lot 33, Block 1, Mace River Ranch Subdivision No. 2: Thence S84°54'46"W 102.00; Thence N05°05'14"W, 185.00 feet; Thence N84°54'46"E, 82.00 feet; Thence S38°46'38"E, 36.06 feet; Thence S05°05'14"E, 155.00 feet to the POINT OF BEGINNING.

Lot 34, Block 1

BEGINNING at the southeast corner of Lot 34, Block 1, Mace River Ranch Subdivision No. 2: Thence S84°54'46"W, 102.00 feet; Thence N05°05'14"W, 185.00 feet; Thence N84°54'46"E, 102.00 feet; Thence S05°05'14"E, 185.00 feet to the POINT OF BEGINNING.

Lot 35, Block 1

BEGINNING at the southeast corner of Lot 35, Block 1, Mace River Ranch Subdivision No. 2: Thence S84°54'46"W, 102.00 feet; Thence N05°05'14"W, 185.00 feet; Thence N84°54'46"E, 102.00 feet; Thence S05°05'14"E, 185.00 feet to the POINT OF BEGINNING.

Lot 36, Block 1

BEGINNING at the southeast corner of Lot 35, Block 1, Mace River Ranch Subdivision No. 2: Thence S84°54'46"W, 113.80 feet; Thence N01°05'44"E, 186.08 feet; Thence N84°54'46"E, 93.76 feet; Thence S05°05'14"E, 185.00 feet to the POINT OF BEGINNING.

Lot 38, Block 1

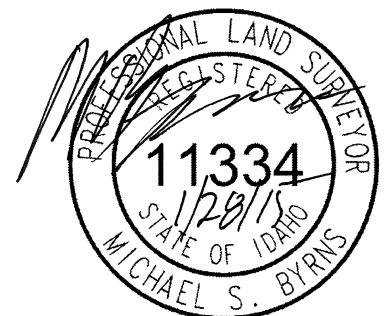
BEGINNING at the southeast corner of Lot 38, Block 1, Mace River Ranch Subdivision No. 2: Thence 29.69 feet along a curve to the right having a radius of 461.25 feet, and a chord of S89°15'04"W, 29.69 feet; Thence N88°54'16"W, 70.32 feet; Thence N01°05'44"E, 185.00 feet; Thence S88°54'16"E, 85.24 feet; Thence N84°54'46"E, 14.84 feet; Thence S01°05'44"W, 185.64 feet to the POINT OF BEGINNING.

Lot 14, Block 3

BEGINNING at the southwest corner of Lot 14, Block 3, Mace River Ranch Subdivision No. 2: Thence N05°13'16"W, 74.00 feet; Thence N39°50'45"E, 14.12 feet; Thence N84°54'46"E, 110.00 feet; Thence S05°13'16"E, 84.00 feet; Thence S84°54'46"W, 120.00 feet to the POINT OF BEGINNING.

Lot 8, Block 4

BEGINNING at the northeast corner of Lot 8, Block 4, Mace River Ranch Subdivision No. 2:





**J-U-B ENGINEERS, INC.**

Thence 83.48 feet along a curve to the left having a radius of 487.71 feet, and a chord of S10°07'29"E, 83.38 feet; Thence S75°26'55"W, 121.19 feet; Thence N14°21'20"W, 79.00 feet; Thence N05°13'16"W, 25.00 feet; Thence N84°54'20"E, 125.00 feet to the POINT OF BEGINNING.

Lot 11, Block 4

BEGINNING at the northeast corner of Lot 11, Block 4, Mace River Ranch Subdivision No. 2:  
Thence S05°13'16"E, 120.00 feet; Thence S84°54'46"W, 90.28 feet; Thence N05°05'14"W, 120.00 feet;  
Thence N84°54'46"E, 90.00 feet to the POINT OF BEGINNING.

Lot 12, Block 4

BEGINNING at the northeast corner of Lot 12, Block 4, Mace River Ranch Subdivision No. 2:  
Thence S05°05'14"E, 120.00 feet; Thence S84°54'46"W, 87.26 feet; Thence N88°54'16"W, 9.18 feet;  
Thence N01°09'53"W, 120.49 feet; Thence 35.00 feet along a non-tangent curve to the left having a radius of 511.25 feet, and a chord of N86°52'27"E, 34.99 feet; Thence N84°54'46"E, 53.17 feet to the POINT OF BEGINNING.

THE END.

